



Laurel View, Woodside Park, N12 7DT

Guide Price £1,100,000 Freehold

Council Tax Band G

**REAL ESTATES**  
Est. 1981

Estate Agents · Residential Sales · Investments · Lettings



\* CHAIN FREE \* Real Estates are pleased to bring to the market this FOUR BEDROOM DETACHED family home located within easy reach of Woodside Park Underground Station, the Dollis Valley Greenwalk and excellent schools, including Finchley Catholic and Dwight.

This property benefits from a LARGE DRIVEWAY for multiple cars, an INTEGRAL GARAGE plus SIDE ACCESS to the rear secluded garden.

The ground floor comprises an L-shaped reception space, a separate kitchen and a guest WC. To the first floor, there are four good-sized bedrooms and the bathroom, whilst the loft provides plenty of storage.

Laurel View caters for the shops, cafes and general amenities on both Whetstone and North Finchley High Roads.

SOLE AGENT

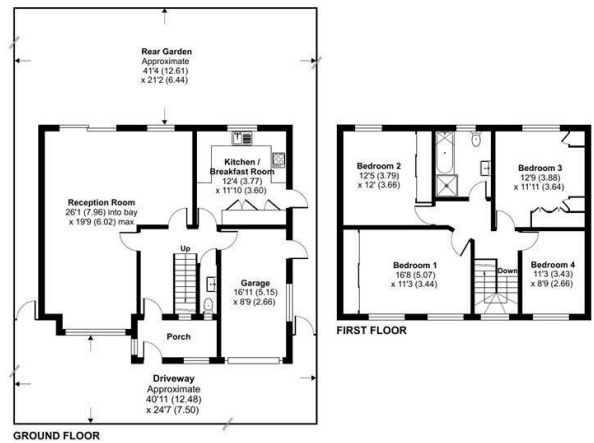






**Laurel View, London, N12**

Approximate Area = 1507 sq ft / 140 sq m  
Garage = 146 sq ft / 13.5 sq m  
Total = 1653 sq ft / 153.5 sq m  
For identification only - Not to scale



Floor plan produced in accordance with RICS Property Measurement 2nd Edition, incorporating International Property Measurement Standards (IPMS2 Residential). © richcom 2025. Produced for Real Estates. REF: 1345541

